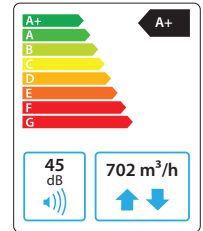


Domekt R 700 F C6M

Maximal air flow, m ³ /h	702
Maximal air flow, l/s	194
Reference flow rate, m ³ /s	0,137
Reference pressure difference, Pa	50
SPI, W/(m ³ /h)	0,24
Thermal efficiency of heat recovery, %	83
Electric air heater capacity, kW / Δt, °C	2/11,9
Supply voltage, V	1~230
Maximal operating current HE, A	11,7
Electric power input of the fan drive at maximum flow rate, W	149
Electric power input of the fan drive at reference flow rate, W	64
Filters dimensions BxHxL, mm	368x375x46
Unit dimensions BxHxL, mm	850x420x1240
Maintenance space, mm	500
Unit weight, kg	93



Acoustic data

A-weighted sound power level L_{WA} , dB(A)
at reference flow rate

Supply inlet	51
Supply outlet	64
Exhaust inlet	52
Exhaust outlet	65
Casing	45

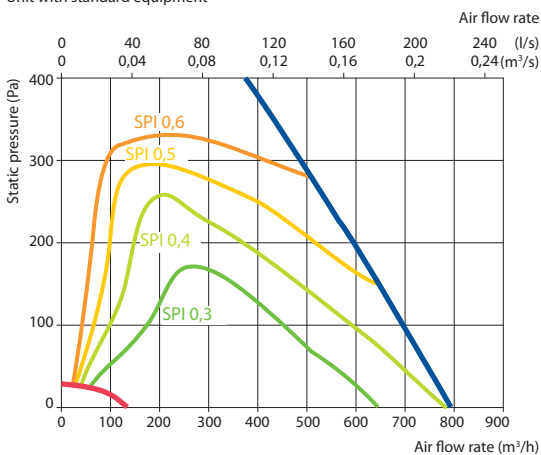
A-weighted sound pressure level L_{PA} , dB(A)

10 m² normally isolated room, distance from casing – 3 m.

Surroundings	34
--------------	----

Performance

Unit with standard equipment

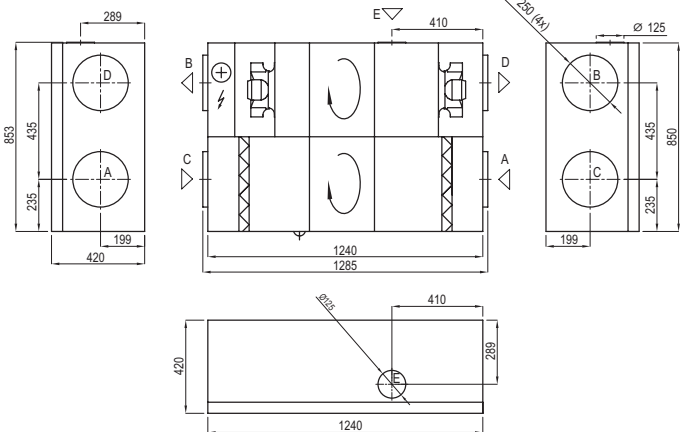


Temperature efficiency

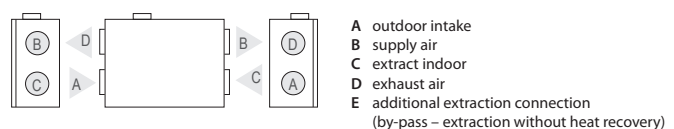
	Winter					Summer		
Outdoor temperature, °C	-23	-15	-10	-5	0	25	30	35
After heat exchanger, °C	14,2	15,6	16,5	17,3	18,2	22,5	23,4	24,2

indoor +22°C, 20 % RH

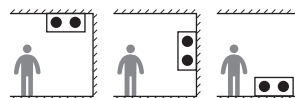
Shown as left (L1)



Shown as right (R1)



Mounting positions



Accessories

Closing damper	AGUJ-M-250+LF230/CM230
Silencer	A/D AGS-250-50-600-M
	B/C AGS-250-50-900-M
Water heater	DH-250
PPU	PPU-HW-3R-15-0,63-W2
2-way valve (heater)	VVP47.10-0,63

Water cooler	DCW-0,7-5
2-way valve (cooler)	VVP47.15-2,5
Outdoor grill	LD-250
Water heater-cooler	DHCW-250
DX heater-cooler	DCF-0,7-5
Heat pump unit	MOU-18HFN8a+KA8140

